

Precision Components Inc.

quality building materials shipped worldwide



ACCESSORIES & SERVICES

Customize Your New
Building Project

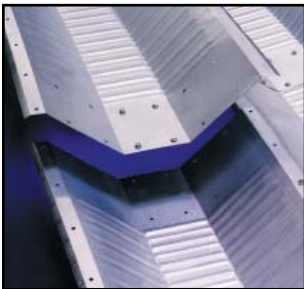


WELCOME

You have heard the old adage, “it’s not what you know it’s who you know” Precision is the Building Materials Supplier to “know” when it comes to doing any type of construction project. We invite you to review this information to learn more about Precision, our products and our free referral service. This information will help you see many of the ways Precision can assist you, not only with great savings on materials, but also with our experience and knowledge, in customizing your new or existing building project. Precision consultants help literally thousands of customers, from the “do-it yourselfer” to the general contractor **“take their project from a dream to reality!”**



Free Referral Service: Regardless of whether you are a General Contractor with a complex commercial project or simply a do-it yourself residential, garage or shop project, having access to professionals with the knowledge to complete the job under budget and on time is critical to any project. By employing state of the art technology, Precision maintains a constantly growing data base of over 250,000 Suppliers, Installers, Engineers and other construction professionals in order to meet the growing demands for quality materials and dependable contractors. We believe you will find that Precision’s free referral service is the one source you must have for any construction project.



Custom Building Materials: Ordering the right quantity and suitable material can be very time consuming; the expense of labor and material to re-place and install incorrect materials is one of the main reasons so many projects go over budget. With over 50 years of Experience and Knowledge to assist you in ordering the appropriate materials, Precision is rapidly becoming one of the leading wholesale suppliers of top quality building materials. From large complex construction projects, down to simply a need for a single replacement part, from interior finish products to exterior aesthetics, Precision can provide almost any building material or accessories to compliment and customize your building. With their hands-on experience and employee owned mentality, a consultant at Precision can work for you.



Great Savings: Precision’s unique distribution system allows our authorized dealers a substantial savings on most products. Most other national retail distribution centers such as Home Depot, Lowes and others have products shipped from manufacturer, to wholesaler, to their retail location. The product is then sold to a contractor or customer who must deliver and install it. Precision arranges to have building materials shipped directly from the manufacturer to your end customer’s location. This system along with the high volume discounts of a national supplier allows Precision to offer the highest quality building materials on the market, at prices in many cases of up to 70% off of suggested retail! This additional savings many times allows for additional profits on the installation of the product or can be put in your pocket if you wish to do-it yourself.

Great Service: We take pride in the fact that our consultants can probably tell you “how many threads are on the bolts”. If we don’t know, we will do our best to find out for you. Precision’s dedication and commitment to customer service includes providing our authorized dealers and customers not only with outstanding customer service and unsurpassed product knowledge, but also toll free access to our consultants after hours. In addition, Precision’s extensive and on-going product research and development team is continually adding additional high quality products, services, and installers to our authorized dealer’s materials and referral programs. All the service is included and there is no charge for consultations, verification of existing orders or quotes. Call Precision today and get one of our consultants working to assist you.

“Take your project from a dream to reality!”

1-866-321-8816

HISTORY OF STEEL

Precision Components, Inc. is proud to be your building materials supplier. Because our history began by specializing in steel components, we feel the history and development of steel is fascinating. Just as the ancient people felt the explosion when the first steel fell from the sky, we hope, with this brief history, you will share our enthusiasm for a product that is still exploding on the market place today just as it began some 4000 years ago.

In order to make steel, one must first obtain iron. Unfortunately for ancient peoples, Iron does not occur in its pure form anywhere in nature; only as an oxide that must be smelted to obtain pure iron which is used to make steel. That is why in ancient times Iron was highly prized, more so even than gold or silver; its only known "source" was to be provided by God, falling from the sky (as meteorites) and so it was called "sky metal" by the Sumerians and "black copper from the sky" by the Egyptians. Iron, unlike gold or silver, requires a whopping 1535 degrees Celsius to melt, so it would have been impossible for the ancients to smelt the iron ore even if they had known it was contained in some of the rocks they had!

Fast forward a few thousand years; people have come up with the technology to create and manipulate steel. Steel was the "Iron Horse" and the rails that helped carve America out of the wild frontier. During World War I, the steel building was born. The first steel building was a Quonset design, and started with a wooden frame with light-gauge tin that nailed to the outside, similar to a modern day pole barn but round. We old timers will never forget the nights we spent in the military bunks in those Quonset huts or Ralph Nabors who made them famous in the TV Series "Gomer Pile". Because of the speed of erection, the ability to withstand fallout, high snow and winds, 150,000-170,000 Quonsets were manufactured (during WWII alone).

"These huts born of one crisis served for two-and were never really recognized for either. Lest we let the story of those they served be testimony to their role in American History". - Chris Chiei

"It took the Lord six days to create the world, but the Quonset hut went up in just one. They are so simple that anyone who could hammer a nail could set it up. Ten Seabees were able to build one in a day".

"In 1946 you could buy a surplus Quonset 20 ft. for \$1,048.00 and a 40 ft. for \$3,436.00 plus shipping, after which you needed only to find a suitable lot".

As technology improved so did the Quonset design. By 1958 it was re-designed and patented as the wooden frame was eliminated by using a heavier gauge, deep corrugated panels. With the new design, 60% of the market was in the farming markets. The deep corrugated panels and original curved roof maintained heavy snow and wind load benefits, but also added several dimensions not available with any other product, including the capability of grain and potato storage.

By the 1980's the technology had allowed for a straighter or Modified Arch design which moved more into the industrial industry. Through the 90's the technology advanced enough that the building started making a significant impact on the commercial, church and retail markets. Today, just like in ancient times, the steel panel design buildings are exploding again on the residential market, as a result of still being a super-economical way to build. They are now available in 4 different models; even one with straight walls, a pitched roof and offered in colored panels!

Steel is still the backbone of America, in bridges, the skeleton of skyscrapers, and the framework of automobiles. It is found in every aspect of everyday life; we find it contained in the food we eat, creating the precise instruments used by doctors, and in almost every place we work and live. As the ancient people of old would say "Thank God for Steel".

FREE SERVICES

Precision Components, Inc. isn't just your building materials supplier; we want to be your partner during your construction project. We offer many services and referrals to assist you so that your project can run smoothly, on budget, and on time. Ask your Precision representative about what other services you might need today or in the future.

Insurance: Other than your home, your building project may be the largest investment you ever make. You will want to make sure to protect your long term investment, for you and your children. Unfortunately, one of the most costly mistakes building owners make is under insuring their building. Too often, they only take into consideration the material and labor cost, not the replacement value. Ask your Precision Representative about Insurance suggestions or referrals. Precision wants to make sure you and your investment are covered.

Financing: For larger projects, most customers already have financing their building. Having the proper insurance and contractor bonding is important and may be required by most finance companies. Precision's experience and relationship with financial institutions that specialize in finance and leasing in the construction and steel industry can make this step much less strenuous. In most cases Precision can provide materials, estimates, referrals, and contractors that can easily obtain the financing or lease options to fit your needs.

Customer Service: We don't like to "toot our own horn" at Precision, but we do, hands down, have the best customer service in the industry. With 24 hour customer service, you will always be able to contact your representative. We train our representatives to not just meet, but exceed their customer's expectations for quality and service. Call today to see how Precision Components can assist you.

1-866-321-8816

CONSTRUCTION SERVICES

Whether you want to do-it yourself or need a professional, Precision maintains a data base of over 250,000 contractors ranging from general contractors and steel erectors to welders and handymen. Just let us know what part of your project you would like help with!

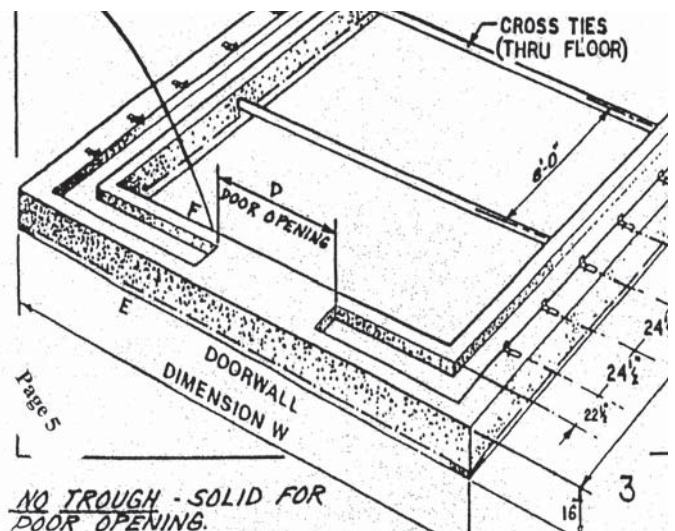
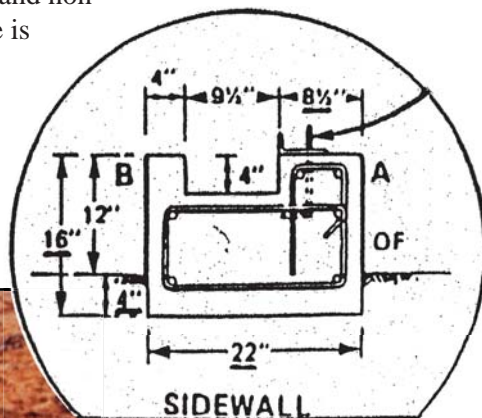
- Architects/Engineers
- Erectors
- HVAC
- Plumbing
- Concrete
- Excavators
- Interior Finish
- Remodel
- Electrical
- General Contractors
- Landscaping Etc.
- Welders

CONCRETE OPTIONS

"If the house is not built on a sure foundation, the house will surely fall". Regardless of whether you're installing piers, footers or a floor, getting a sure foundation is certainly one of the most important phases of construction. Should you need a concrete contractor or engineer, having Precision's network of concrete contractors and professional engineers available for assistance will give you peace of mind.

Keyway: The original keyway design or trough as it is commonly called, has the benefit of being the strongest and only design for very extreme snow, wind and grain storage capacity. Many General contractors prefer the keyway design due to the experienced labor and forming requirements (\$15-20.00 per ln. ft.) as well as the additional concrete required. As a result it is the standard method of attachment for the panel type buildings. However, it does not allow the flexibility of moving the building later and makes future expansion a little more difficult. Because the connection is made using concrete and non-shrinking grout, there is little room for error.

Ask your Precision Representative about more details regarding Keyway or trough design.



HEATING AND COOLING OPTIONS

- Electrical
- Gas
- Wood
- Natural Temperature

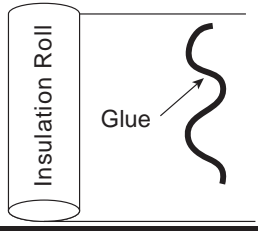
With utility cost tripling over the past years and the expected future increases, obtaining an energy efficient building will provide a lifetime of savings and comfort.

INSULATION OPTIONS

EZ-Roll (Up to R-12)



EZ-Roll



Adhesive applied directly to panel, or material every two foot using a zigzag 1/4" bead. (Glue by others)



**Semi-rigid Board over EZ-Roll
(Mounted on furring strip)**

Apply EZ-Roll as described fasten furring strips to panels and attach rigid or semi-rigid board for interior aesthetics.

White Vinyl Insulation with Spacer or Pin System (Up to R-32)

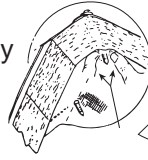


Plastic Pin System

Screw on Plastic Spacers

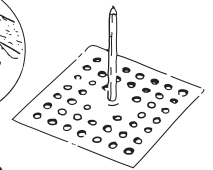


Apply Insulation horizontally and push onto point of space



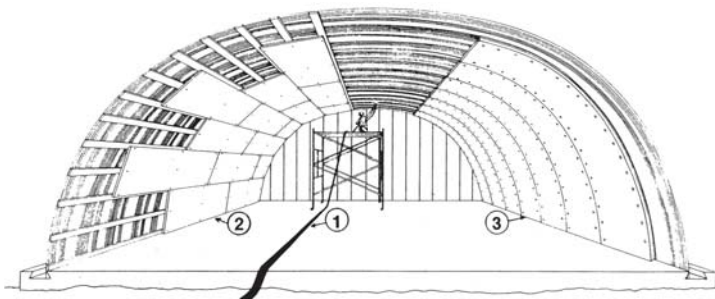
Apply pressure as shown

Steel Pin System



Other Options

- Blown or Spray-on
- Rigid Board to Panels



- Semi-rigid insulation board mounted on furring strips

AIR FLOW



Circular
20" or 24" throat,
with corrugated or
flat flashing.



Standard Wall Louvers
Rectangular standard with
custom shapes available



Cupola

- Available sizes:
2', 3,' and 4' square
- Functional vent and
attractive appearance
- Weathervane optional



Roof Jacks
Pre-formed rubber
flashing for small
roof penetrations
such as plumbing or
metal chimneys.



Turbine Vents
Great for use in grain storage
and other agricultural
buildings. Allows for
penetrations to be adjusted
with the use of a roof jack.

Controlling Airflow is very critical in controlling the temperature, moisture, and smell inside your building.

AESTHETICS

Be sure to ask your Precision representative for a quote or if any of these other products might be the right aesthetic option for you.

EXTERIOR OPTIONS



Heavy duty 22 Gage Endwalls
(Grain Storage)



Colored Sheetting & Framing
(by Precision)



Colored Sheetting by Precision
(Framing by owner)



Wood or Vinyl



Stucco



Colored Roof and Sidewall
Panels (*Some models)

INTERIOR OPTIONS

Residential with
second floor lofts

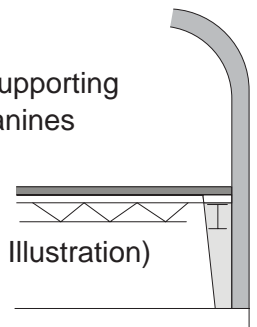


Grand Entry ways with
custom framing or openings



Self Supporting
Mezzanines

(Mezzanine Illustration)



LIGHTING OPTIONS

With rising utility cost, a well lit interior not only adds a more cheerful atmosphere but can provide a great savings.

- Fluorescent
- Hanging
- Natural Light
- Windows (framing locally)
- Roof Light Panels
- Wall Light Panels



Translucent Roof Panels



Translucent Roof Panels



Translucent Endwall Panels



Track Lighting



Windows Endwalls



Fluorescent Lighting



Windows in Side Panels

DOOR OPTIONS

Our representatives can assist you in finding the right door for your clearance requirements and order the correct components for proper fit and installation for a lifetime of use.

* Some Door types may require additional headroom and/or field modification.

Walkdoors

- Standard or self framing available
- 24 Gauge pre-painted
- Galvanized leaf 1 1/2" thick with insulated core and weatherstrip
- Narrow Lite and half glass options 3070, 4070 and 6070 Sizes



Commercial Sectional Doors

- Pre-painted commercial 24 gauge steel available
- Insulated with vinyl or Steel Back Standard, Vertical, Hi-lift or Low Headroom options
- Openers and remote options for every application
- Wind certification and glazing available. (National supplier with over 50 door centers)



Roll-Up Doors*

- Coils up for zero loss of headroom (No tracks)
- Insulation and Electric operators available
- Windrating available for select sizes
- Pre-Painted 26 gauge Steel Huge color selection



Electric Operators

Bi-fold or Hi-fold Hangar Doors*

- Can be custom ordered to almost any size!
- Great for farm or agricultural use
- Electric operators available.



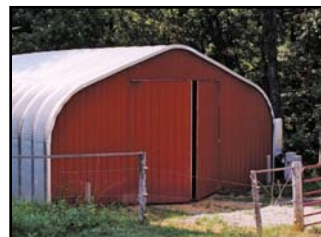
* Not available in all building models.
Additional costs for materials and engineering may apply

Sliding Doors*

- Great for agricultural applications
- Economical and easy to install
- Sheeting, Trim, and Fasteners supplied for a perfect match to your building



22 Ga (Industrial) Sliding Doors



29 Ga (Residential) Swinging Doors



26 Ga (Agriculture) Sliding Doors

EQUESTRIAN



Cupolas



Feeders



Dutch Doors

A Classic Style door, perfect for exterior entrance to stalls
Many Color Schemes Available All Steel

Cross Bucks and Backing, built for a lifetime of use!
(Requires scanopy for sidewall applications)



Custom Stall



Standard or Custom Stall Package

EXTRAS AESTHETICS



Sidewall canopy kit

Be sure to ask your Precision representative for a quote or if any of these other products might be the right aesthetic option for you.



Additional panels for overhangs or porches



Synthetic Brick, Rock, or Stucco Fronts



Custom Endwall or Sidewall Canopy



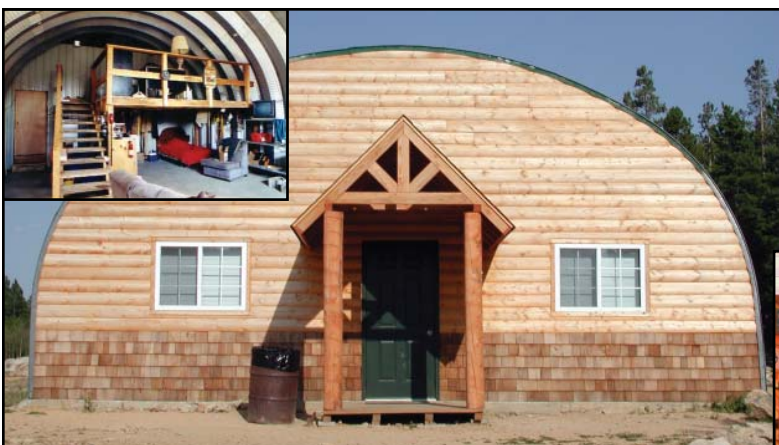
ADDITIONAL COMPONENTS

Steel Sheeting
Structural Steel
Fasteners
Components and more

Many customers take delivery of their building kit and then call requesting more material for other projects or to add on because the building is not wide enough, not tall enough (which can't be changed later) or the building is simply too small or not long enough.

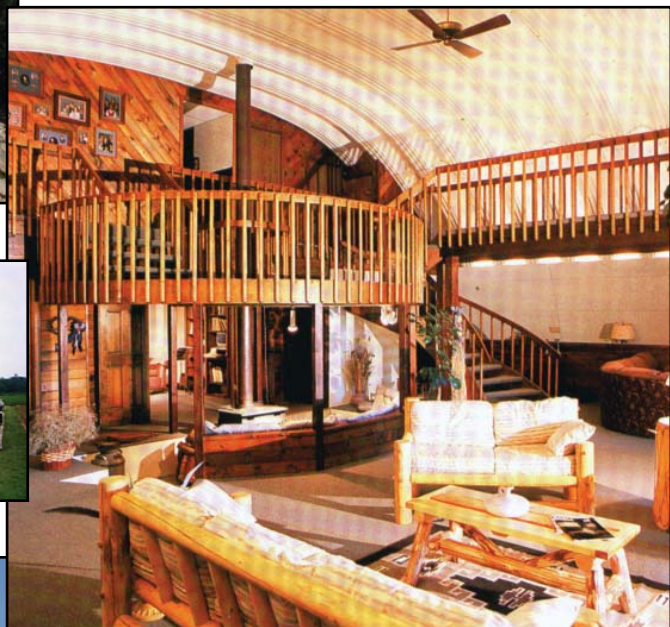
Be sure to ask your Precision representative about other discount buildings or sizes available. Sometimes we can assist in trading up in size for very little additional cost.

TESTIMONIALS



◀ “Precision was the answer to prayer for our Non-Profit Church Camp, just when we had given up hope - they were there!”

▶ “And to think that before we met Precision we still thought Quonsets were only for farm buildings, not the most energy and cost efficient way to build a home.”



◀ “Precision took our “little” budget and added “big” imagination. The results speak for them selves. You can't buy imagination – with Precision it came free.”
Thanks Precision!

ALL PURCHASES SUBJECT TO THESE TERMS AND CONDITIONS

A. ORDER/PAYMENT. By purchasing components from the Seller, the Buyer agrees that these components orders provided are per the customer request and that the Buyer is responsible for ordering components that will suit the use intended by the Buyer. Buyer understands that some products may differ from the photographs portrayed herein, and availability is subject to change without notice. Buyer understands that all items purchased are special ordered from third party vendors, and often must be pre-paid at the time of order or will be added to the building supplier's COD; and must be paid in certified funds at the time of building delivery. For Buyer's protection against damage in shipping of materials, insulation, roll up doors, sliding doors, etc. may not be shipped with the building; but typically ship direct from third party vendor. Deposits on component/revision orders are due within 5 days of Buyer's acceptance date to avoid delays. The balance of these items must be paid COD upon delivery of the building, or prior to shipment, and must be delivered within 30 days after the building delivery; or from the time of order for components only. Due to the volume of orders you must call our components department a minimum of two weeks prior to your requested delivery date. Buyer further agrees that additional material and/or freight increases may be added to orders not released in writing by the Buyer for delivery in order to accept delivery within 30 days, or if delivery is delayed for any other reason. Because components are special ordered for the Buyer, once Buyer's order is accepted by Seller, orders may not be cancelled or the deposit refunded. Any cancellation request must be received in writing, and depending on the stage of the order, Buyer may be liable for up to the full contract price in order to cancel component orders. Faxed signatures on the agreement and deposit checks shall be deemed as originals for all purposes.

B. SHIPMENT/DELIVERY. Buyer's requested delivery date is not binding on the Seller. Buyer agrees that any delivery dates stated by Seller whatsoever shall be estimates only and may be subject to change without notice. Buyer agrees that Seller shall not under any circumstances be liable to Buyer for any special, actual, or consequential damages of any kind which are caused by, any delay in delivery or in any failure to attain any particular delivery date, without regard to the cause of any such delay or failure, including inability on account of causes beyond Seller's reasonable control to obtain the necessary labor, building components, components, or manufacturing facilities, and the Buyer specifically waives and promises not to assert any and all claims for damages arising from any such delay or failure, and any and all defenses to any breach of contract claim asserted by Seller which are based on any alleged delivery delay. Seller will attempt to make complete delivery, but Buyer agrees that the Seller may, in its discretion, make partial shipments of the materials ordered that are shipped from third party vendors. Third party vendors include, but are not limited to overhead doors, sliding doors, and insulation suppliers cannot accept COD payment, therefore all component orders must be pre-paid before scheduling or paid with the building supplier's COD. Buyer specifically agrees that Seller is not responsible for timeliness of delivery of addendums, change orders, or special orders obtained from third party vendors or of the suitability of such items for any particular use. Any dispute about the quality, condition, or workmanship of the building components, or otherwise in connection with the terms of this contract shall not entitle the buyer to reject or revoke acceptance of the building components.

C. INVENTORY. Upon taking possession, Buyer must strictly inventory building components for damages, loss or shortages and take note of any discrepancies on the Bill of Lading. Any building components purchased by Buyer hereunder shall be deemed fully accepted by Buyer, and any claims for damages, shortages, defects, or discrepancies to building components, shall be deemed waived unless any such claims are noted in writing at the time of delivery on the Bill of Lading. Seller shall not be responsible for any shortages, damages, or defects which are caused by third party (Including trucking company), whether or not such third party is hired by Seller. In any such case, any claim made by Buyer shall be made solely against such third party, or trucking company. Buyer must immediately notify the seller of any defects in the delivery and of any building components noted on bill of lading, that the Buyer believes are not conforming to the terms and specifications of this contract. Such notice must be made in writing and must specifically identify the building components alleged to be non-conforming and the condition which makes such building components non-conforming. After receipt of such written notice of any non-conformities, the Seller shall have a reasonable time to work with third party vendors to cure any such conditions and/or provide conforming building components and, in any event, such reasonable time shall be no less than 45 days, but could be longer, depending on the situation.

D. REMEDY. Seller's liability shall not, in any event, include Buyer's cost, lost profits, goodwill, personal injury, or any special, incidental, or consequential damages, whether such damages arise out of, or are a result of, any breach of contract, warranty, tort (including negligence), strict liability, or otherwise Seller shall not be liable for any lost claim, expense, or damage caused by, contributed to, or arising out of, the acts or omissions of Buyer or third parties (including, without limitation, carriers), whether by negligence, failure to maintain the building components or otherwise. Buyer understands that building components are not machine precision manufactured. Some field cutting, drilling, or welding might be necessary for installation. Buyer accepts responsibility for making minor field modifications. Buyer hereby agrees to bear the risk of loss or damages to the building components from and after the point in time that the building components reach the jobsite (F.O.B.), specified herein for delivery. Buyer agrees to maintain adequate insurance coverage to insure Seller and Manufacturer against such risk of loss from the time risk of loss passes, through construction and after construction is completed. Buyer understands that building components are vulnerable to damage from snow, wind, water, and vandalism, before and after construction, and Buyer agrees to indemnify and hold Seller harmless for any such damage from same, as well as from any and all damage that may occur to the building components after the risk of loss passes to the Buyer upon delivery (F.O.B.) to the jobsite specified herein.

E. CODES. Buyer is solely responsible for ordering the correct building components to, and erecting a structure that does, when complete, meets all State, City, or County, whichever may be greater, for snow, wind, code, or other requirements, and zoning. In any event, Seller shall be held harmless against Buyers failure to order building components which will be sufficient to withstand local environmental conditions, and Seller makes no representation as to the adequacy of the snow, wind or codes compliance of building materials ordered for such purposes.

F. WARRANTY. In the case of any dispute, the Buyer shall take delivery of the building components and make payment to the Seller, and make a claim under the manufacturer's warranty. This remedy shall be in lieu of all other remedies available to the Buyer. Warranties on Sellers components, or coated panels, rustproof, roof warranties, weather tightness, building components, third party components or any additional warranties, such as, snow or wind loads on building components may be issued by the manufacturer or third party vendor, not by Seller, and shall be as stated in the warranty certificates so issued. Seller does not warrant such components, but may pass to Buyer any available warranty given by Manufacturer or third party Vendors. Buyer and Seller agree to cooperate fully with each party and Manufacturer or Vendor in the event of a warranty claim on such components. Buyer agrees to indemnify and hold Seller harmless from any such damage in the event of a warranty claim. Seller reserves the right to modify or substitute for the materials or design for the building components, so long as the new design or building components continues to meet the specifications for wind, snow, and codes specified on this agreement, and Seller reserves the right to substitute superseding design, building components, vendors, and manufactured equivalent products, where the interchangeability of the material based on form, fit and function, in place of material offered, and in any such case, Seller shall have no further obligation or liability with respect to any such modification or substitution. Colored panel selections, if ordered, are subject to change without notice. Seller is not responsible for variations in panel color selections. Availability of stock and items shown is subject to change without notice.

G. Upon request, Precision or a dealer of its products may supply the name(s) of potential vendors to supply additional components and contractors to install concrete and erect the building components or perform other work pertaining to the installation and erection of the building components. Precision has not investigated such vendors or contractors, and the provision of name(s) does not constitute a recommendation of their skill or competence. It is important that the Buyer rely solely on his own investigation when selecting a vendor or contractor. It is also important to check with more than one contractor and to secure references for comparisons and to be completely satisfied as to price, quality and timeliness as to the job.

H. Precision or affiliates are not, and will not be, involved in construction, nor are they responsible for any representation or agreement between the dealer or Contractor and Buyer concerning delivery, construction, modification or other items pertaining to the parties thereto.

I. Metal components are not machine precision manufactured. Some field cutting, drilling or welding might be necessary for construction.

J. General contractor, erector, dealer, and owner are responsible for carrying adequate insurance for all risks of loss, damage or injury before, during and after construction, for hiring sub-contractors carrying adequate insurance, including worker's compensation, for naming Manufacturer's as an additional insured under the policies and for indemnifying and holding Manufacturer harmless of and from any loss, damage or injury, whether to person or property, which may occur during construction. All of said parties understand that Manufacturer is not on the construction site and does not provide any person or entity with instruction in construction methods, material moving techniques, site preparation or safety, nor does it apply the tools or equipment for same.

K. Erection of these buildings, as all construction, can be very dangerous. Contractor, Dealer, and Owner are responsible for all safety procedures, and should follow all applicable rules and regulations as well as standard industry safety procedures, and are responsible for selecting workmen and subcontractors with the experience necessary to complete the construction in a safe and workmanlike manner.

L. VENUE. The Seller and Buyer irrevocably agree that this purchase order contract is made under, and is to be enforced and interpreted in accordance with, the laws of the state of Colorado, USA, and the parties irrevocably submit to the jurisdiction of the courts of Colorado for the resolution of any disputes in any way related to this contract or its formation. The parties further agree that any such disputes shall be tried or arbitrated, as the case may be (see below) only in a court of competent jurisdiction situated within Douglas County, Colorado. Buyer specifically waives any objection to venue with respect to any action filed in any such location, or sought to be removed to any such location by Seller. Buyer warrants to the seller that such venue is not inconvenient for any reason, and, even if it later becomes inconvenient, Buyer will never object to such venue. Buyer specifically agrees and acknowledges that such waiver, warranty, and covenant all constitute partial consideration given to the seller for this purchase order agreement and the seller's covenants herein, but for which consideration, Seller would not have entered into this agreement.

M. AGREEMENT. This offer is made by Buyer / Contractor to Seller, and shall constitute an agreement only when a contract has been signed by Buyer and accepted by an executive officer of Seller and, when accepted, these terms and conditions, as well as the contract, constitutes the entire contract between Buyer & Seller.

N. JURISDICTION. The parties each agree that in regard to any dispute that is litigated or arbitrated hereunder, the prevailing party shall be entitled to recover from the other party all costs, attorney fees, expert witness fees, travel fees, and other costs of litigation incurred by the prevailing party. The parties further agree that the Buyer shall, in addition, be liable to the Seller for all costs and attorney fees incurred by the Seller in any pre-litigation or pre-arbitration attempts to collect outstanding amounts due under the terms of the contract, whether or not any such collection efforts ultimately end up in arbitration or litigation.



Precision Components Inc.

quality building materials shipped worldwide

65 Inverness Dr East Suite 500
Englewood CO 80112

1-866-321-8816
www.steelcomponent.com